

Collisionless plasma processes at magnetospheric boundaries: Role of strong nonlinear wave interactions

S. Savin^{a1)}, E. Amata^b, L. Zelenyi^{a,j}, C. Wang^c, H. Li^c, B. Tang^c, G. Pallocchia^b, J. Safrankova^d, Z. Nemecek^d, A. S. Sharma^e, F. Marcucci^b, L. Kozak^f, J. L. Rauch^g, V. Budaev^{a,h}, J. Bleckⁱ, L. Legen^a, M. Nozdrachev^a

^aSpace Research Institute Russian Academy of Sciences, 117997 Moscow, Russia

^bINAF-Istituto di Astrofisica e Planetologia Spaziali, 00133 Roma, Italy

^cNational Space Science Center, Chinese Academy of Sciences, 100190 Beijing, China

^dCharles University, Prague, 1636 Czech Republic

^eUniversity of Maryland, College Park, 20742 Chesapeake, USA

^fKyiv Taras Shevchenko University, 01601 Kyiv, Ukraine

^gLaboratory of Physics and Chemistry of the Environment and Space, 45071 Orleans, France

^hNRC Kurchatov Institute, 123182 Moscow, Russia

ⁱSpace Research Center, 57622 Warsaw, Poland

^jMoscow Physical Technical Institute, 12795 Moscow, Russia

Submitted 18 December 2018

Resubmitted 28 July 2019

Accepted 31 July 2019

DOI: 10.1134/S0370274X19170065

Background. Interaction of the variable solar wind (SW) plasma flow with the Earth's magnetosphere leads to the formation of the bow shock (BS), turbulent magnetosheath (MSH) downstream and magnetopause (MP = magnetospheric boundary) [1–7]. The low frequency eigen modes between BS and MP range at 0.2–10 mHz.

This study is focused on the disturbances propagating towards BS. The excitation of the **3-wave nonlinear interactions**. It was found that for the bi-coherence the horizontal maximum (inferring a nonlinear cascade [1, 2]) at ~ 5 –6 mHz in Fig. 1 strongly dominates near MP (middle top panel). There are the horizontal bi-maxima at ~ 0.3 , 0.5 and 1 mHz the strongly nonlinear impulsive signal of P_{xplus} . Right top panel demonstrates the extended reservoir of the heated MSH plasma – the PB (the stagnant outer cusp with heated MSH plasma [2]). For ~ 3 and 0.1 mHz, the left and right top panels display more similarities, inferring the global influence of PB on the SW plasma streaming around the magnetosphere. C4 displays strong 3-wave interactions in the foreshock (middle left). After BS involved into the eigen magnetospheric oscillations by P_{xplus} impulses, the oscillations are and seem to be driven in MSH by the modulated plasma jets [3]. In the MHD model [4] horizontal maxima at ~ 0.5 and 0.07 mHz are reason-

ably close to the observed cases (~ 0.7 –1 and 0.05 mHz, bottom middle).

Results. The digital-like impulses in P_{xplus} provoke the strongest 3-wave interactions, resulting in appearance of the modulated jets [3, 7]. The MHD model confirms the decisive role of the upstream propagating waves in the strong 3-wave interaction.

We demonstrate the following new results:

1. Strongly nonlinear waves (impulses in the sunward Poynting flux) are acting to reduce the dominant dynamic pressure of the solar wind at the geomagnetic boundaries via the strong nonlinear 3-wave interaction.
2. There are 4 zones of the nonlinear interactions:
 - bow shock;
 - pre-magnetopause deflection region [2];
 - “Plasma Balls” (PB) [2]; with a turbulent barrier separating the flowing and stagnant plasmas [2];
 - resonances are identified as triggered by the short wave impulses of sunward Poynting flux [1, 2, 8]. The sunward Poynting flux bursts trigger surface waves at BS, which modulate the jet production at the BS [1, 2]. The sunward . We analyze data on 27.03.2005 from CLUSTER-4 (C4), DOUBLE STAR TC1 (DS; DS was in low-latitude MSH for 17 hours);
 - foreshock which starts to trigger the interactions.
3. The resonances from magnetopause can be transported back to bow shock namely by the spikes observed in P_{xplus} .

¹⁾e-mail: ssavin@iki.rssi.ru

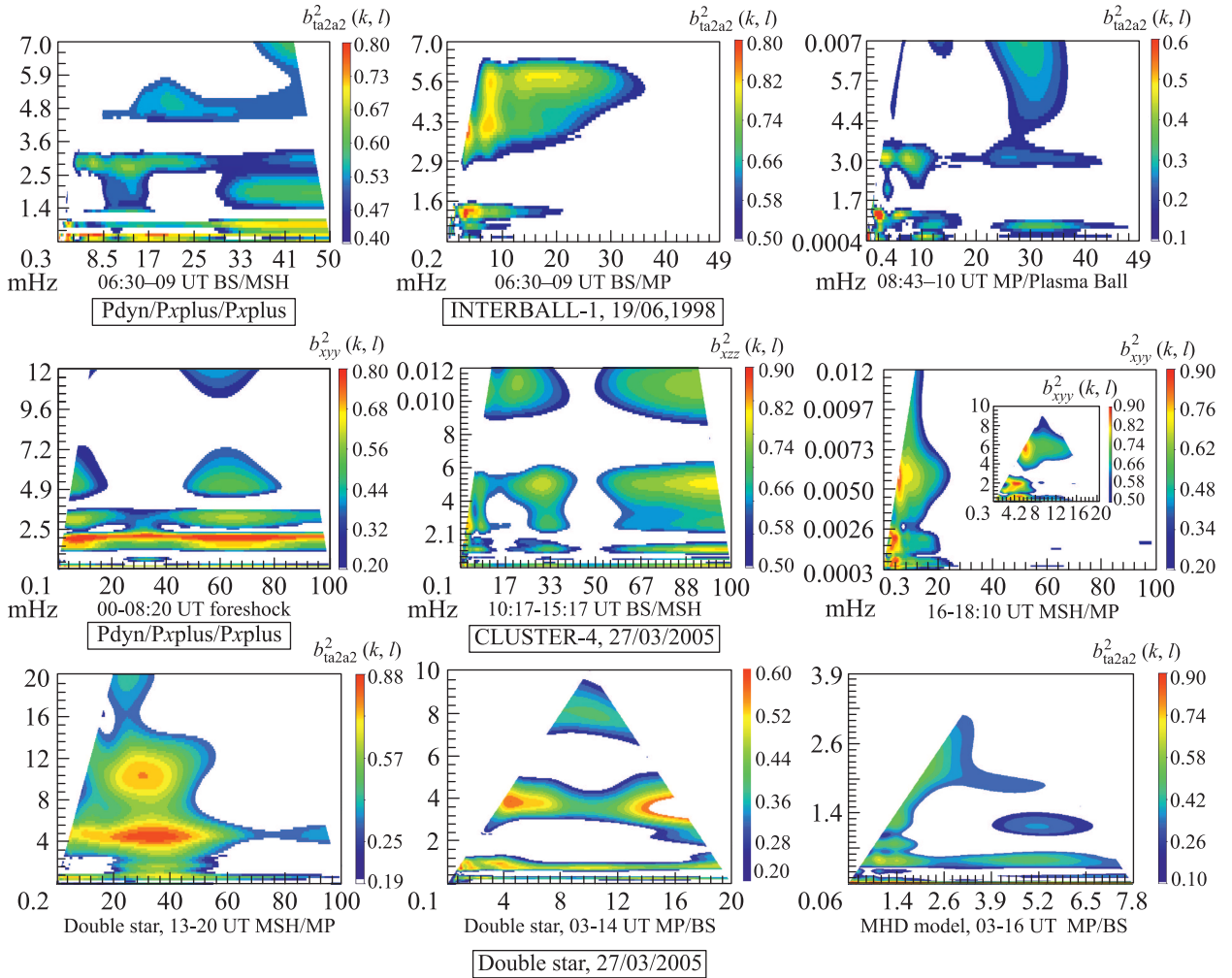


Fig. 1. (Color online) Wavelet bi-spectra ($F_{\text{vertical}} + F_{\text{horizontal}} = F_{\text{sum}}$ (not shown); inputs: $P_{\text{dyn}}/P_{\text{xplus}}/P_{\text{yplus}}$, see text). From top/left to right: I1 BS/MSH; I1 BS/MP; I1 MP-Plasma Ball (PB) [2]; middle: C4 foreshock; C4 BS/MSH; - C4 MSH/MP (+blow up); bottom: DS MSH/MP; DS MP/BS; MHD model

4. The MHD model [3] qualitatively reproduces the nonlinear physics of the solar wind interaction with geomagnetic field in the region from the bow shock to the magnetopause.

The spacecraft and OMNI data were downloaded from the CDAW Website. The spectral analysis used the SWAN software from made LPCEE. ISSI supported one meeting of Savin/Wang Team on the paper topic.

Full text of the paper is published in JETP Letters journal. DOI: 10.1134/S0021364019170028

1. S. P. Savin, L. M. Zelenyi, E. Amata, J. Buechner, J. Blecki, S. I. Klimov, B. Nikutowski, J. L. Rauch, S. A. Romanov, A. A. Skalsky, V. N. Smirnov, P. Song, and K. Stasiewicz, *JETP Lett.* **79**, 452 (2004).
2. S. Savin, A. Skalsky, L. Zelenyi et al. (Collaboration), *Surv. Geophys.* **26**, 95 (2005).
3. S. Savin, E. Amata, V. Budaev, L. Zelenyi, E. A. Kronberg, J. Buechner, J. Safrankova, Z. Nemecek, J. Blecki,

- L. Kozak, S. Klimov, A. Skalsky, and L. Lezhen, *JETP Lett.* **99**, 16 (2014).
4. Y. Q. Hu, X. C. Guo, and C. Wang, *J. Geophys. Res.* **112**, A07215 (2007); doi:10.1029/2006JA012145.
5. A. S. Leonovich, V. A. Mazur, and D. A. Kozlov, in *Low Frequency Waves in Geophysical Monograph* **216**, 151, American Geophysical Union and John Wiley and Sons, Inc (2016).
6. V. M. Nakariakov, V. Pilipenko, and B. Heilig, *Space Sci. Rev.* **200**, 75 (2016); doi:10.1007/s11214-015-0233-0.
7. F. Plaschke, H. Hietala, M. Archer, X. Blanco-Cano, P. Kajdiyc, T. Karlsson, S. Hee Lee, N. Omid, M. Palmroth, V. Roytershteyn, D. Schmid, V. Sergeev, and D. Sibek, *Space Sci. Rev.* **214**, 81 (2018).
8. S. Savin, E. Amata, M. Andre et al. (Collaboration), *Nonlin. Processes Geophys.* **13**, 377 (2006); doi:10.5194/npg-13-377-2006.